

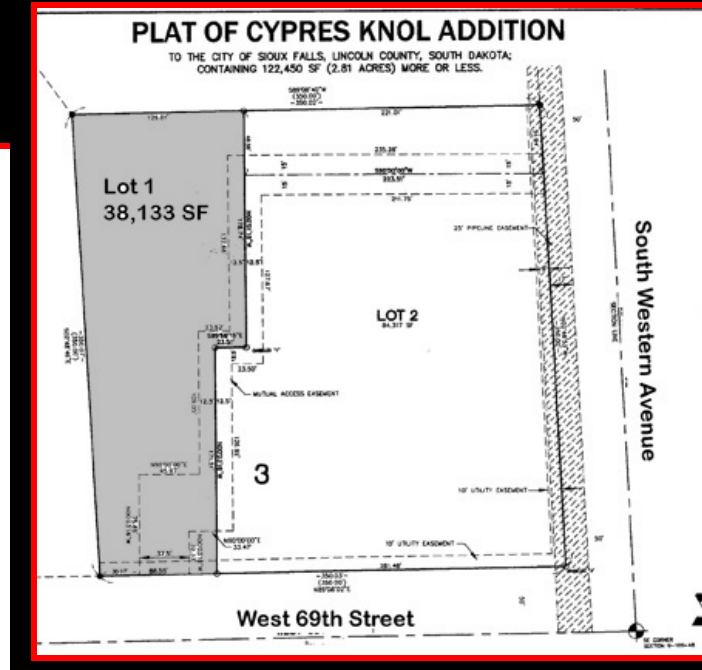


# KUM & GO LAND FOR SALE

**Kum & Go Land**  
**2200 W. 69<sup>th</sup> Street**  
**Sioux Falls, SD 57108**

## Features

- Permissive uses same as C-4 zoning.
- Adjacent to Remington Pointe, a new 14-acre retail and office development.
- Neighbors include Kum & Go Convenience Store, HenkinSchultz Communication Arts, Heather Ridge Village, Avera McGreevy Clinic and First State Bank of Miller.
- Mutual access with Kum & Go.
- Curb cut, driveway and sidewalk already in.
- High growth area of Sioux Falls.



## ***For Information Contact:*** **Kristen Hegg Zueger, SIOR**

**Sandy Klatt**

**605.731.5004 (direct)**

**605.731.5015 (direct)**

1300 W. 57th Street, Suite 100

Sioux Falls, SD 57108

605.336.2111

[kzueger@heggcompanies.com](mailto:kzueger@heggcompanies.com)

[sklatt@heggcompanies.com](mailto:sklatt@heggcompanies.com)

**Available:** 38,133± SF  
**Price:** \$16.00 PSF  
**Terms:** Cash  
**Zoning:** Rolling Heights PD  
**Legal:** Contact Agent

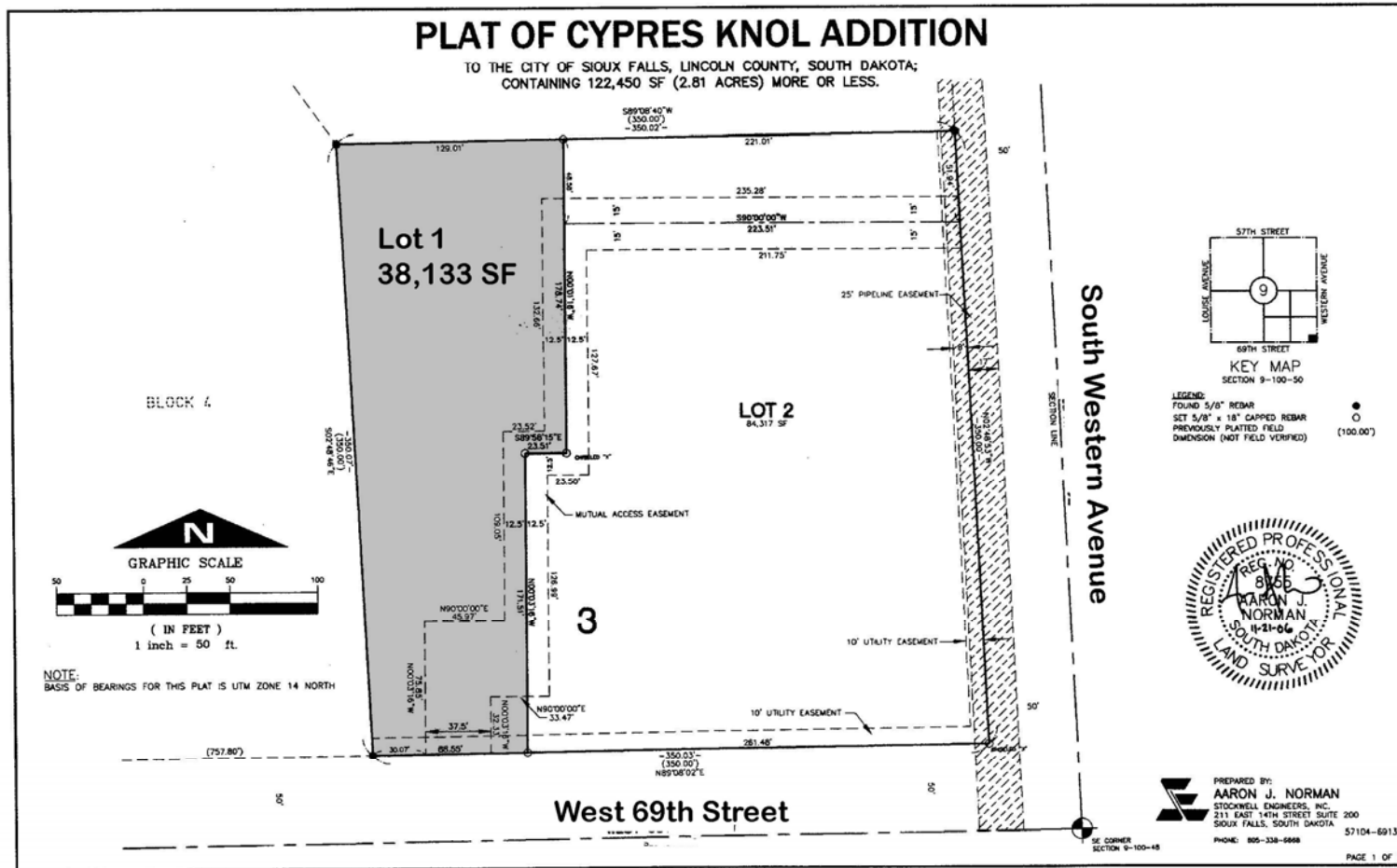
This information has been secured from sources we believe to be reliable, but we make no representation or warranties, expressed or implied, as to the accuracy of the information. All references to age, square footage, income, and expenses are approximate. Buyers or Lessors should conduct their own independent investigations and rely only on those results.

Updated May, 2008



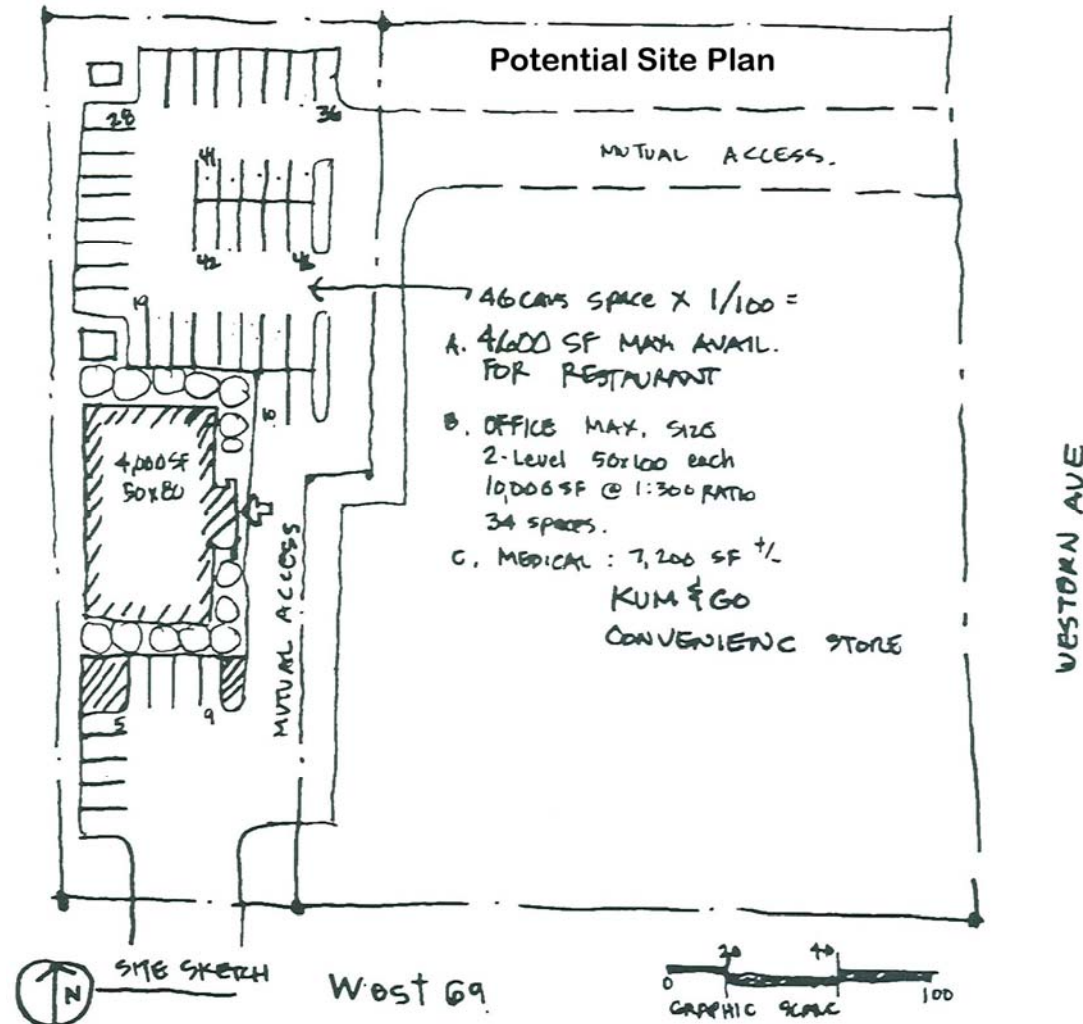
www.heggcompanies.com

# KUM & GO LAND FOR SALE



This information has been secured from sources we believe to be reliable, but we make no representation or warranties, expressed or implied, as to the accuracy of the information. All references to age, square footage, income, and expenses are approximate. Buyers or Lessors should conduct their own independent investigations and rely only on those results.

Updated May, 2008



This information has been secured from sources we believe to be reliable, but we make no representation or warranties, expressed or implied, as to the accuracy of the information. All references to age, square footage, income, and expenses are approximate. Buyers or Lessors should conduct their own independent investigations and rely only on those results.

Updated May, 2008